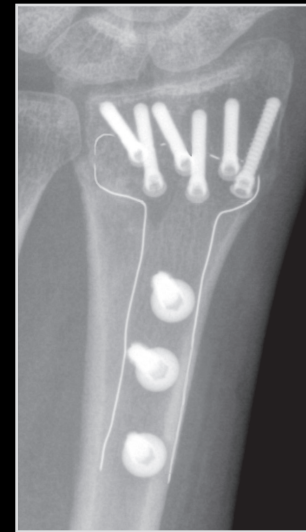
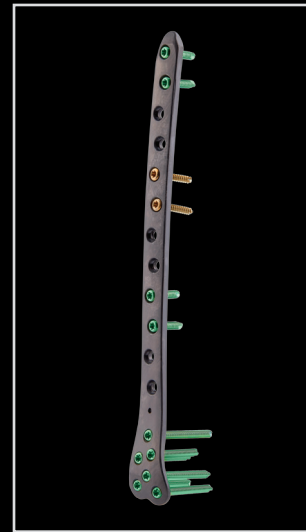




Continuous Carbon Fibers Reinforced Polymer

Piccolo Composite® Nails & Plates

- Optimal Modulus of Elasticity
- Unparalleled Fatigue Strength
- Radiolucent
- MRI/CT- Artifact Free
- Essential in Radiation Therapy
- Plates: No Cold - Welding
- Common Sizes & Surgical Technique

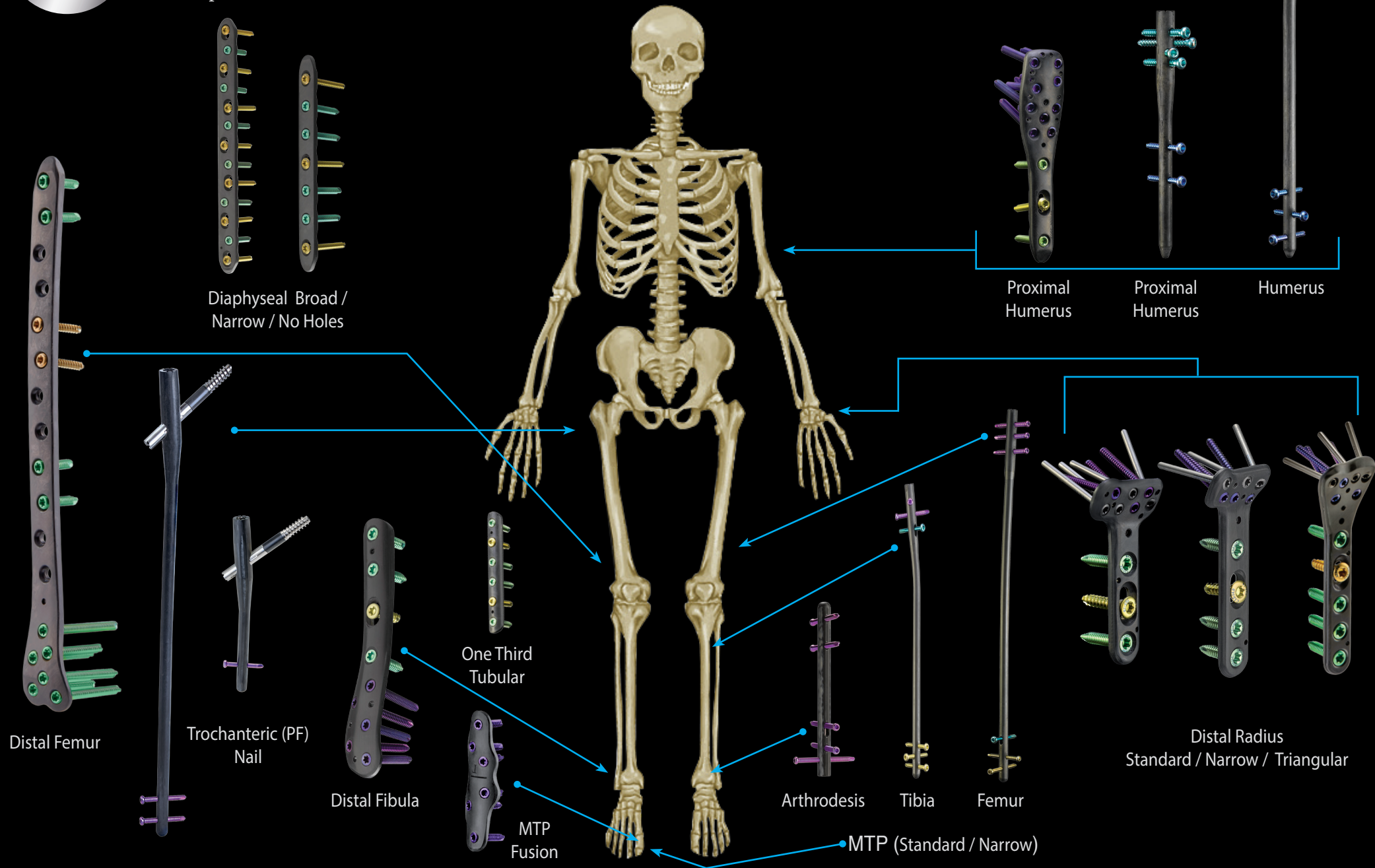


Clearly Better

www.carbo-fix.com



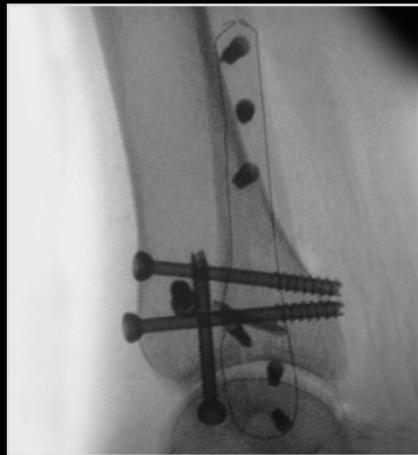
The Piccolo Composite® Portfolio





Unique Biomechanical & Imaging Properties

Clear visibility
through the plate



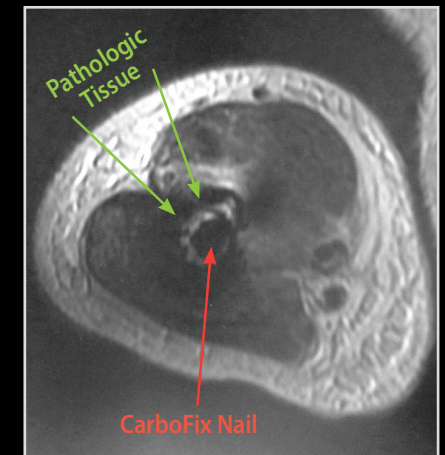
Distal Fibula Plate

Clear visibility
through the nail



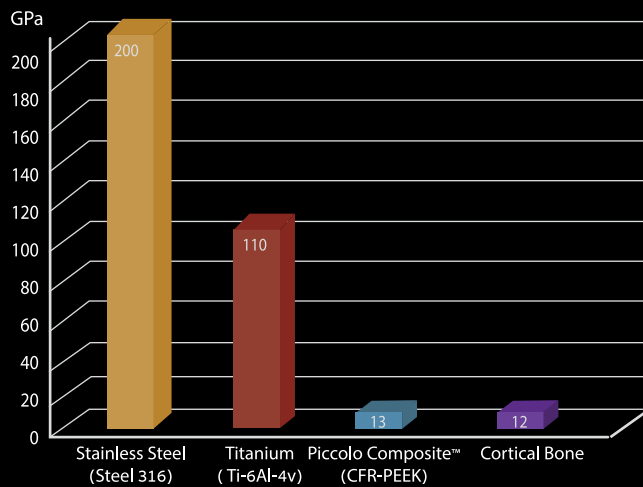
Trochanteric (PF) Nail

MRI & CT: No artifacts
Clear image of adjacent tissue



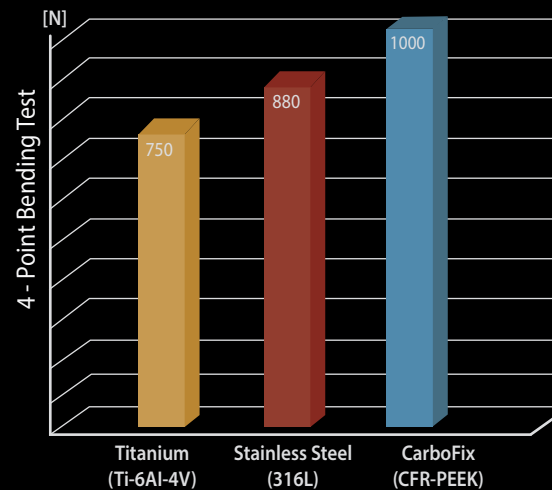
Humeral Nail

Improved modulus of elasticity



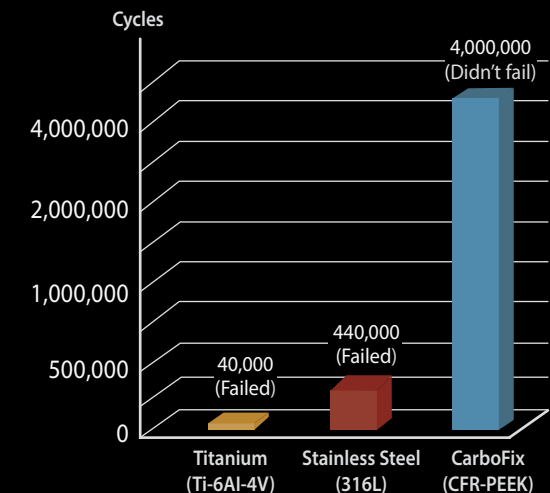
Alok D Sharan, Simon Y Tang, Alexander R. Basic Science of Spinal Diseases
Japee brothers medical publishers.2013; 159-160

Superior bending strength



* Performed on 4.5mm Diaphyseal Plates

Unparalleled fatigue strength



* Bending test: 1800N at 5Hz on Ø 8.5mm rods



Portfolio & Sizes

Plates

Implant	Number of Holes (Length, mm)	Orientation	Thickness (mm)
Distal Radius-Standard	3, 4, 7 (52, 60, 90)	Right or Left	2.4
Distal Radius-Narrow	3, 4 (52, 60)	Right or Left	2.4
Distal Radius-Triangular	3, 4 (54, 63)	Right or Left	2.4
Proximal Humerus	3, 4*, 6, 8, 12* (102, 120*, 156, 192, 262*)	Bi-Lateral	3.7
Distal Fibula	3*, 4, 5*, 6, 9, 11 (72*, 85, 96*, 114, 155, 184)	Right or Left	2.3
One Third Tubular	5, 6, 7, 9, 11 (56, 67, 78, 98, 122)	Bi-Lateral	2.3
Diaphyseal-Narrow	7, 9 (154, 190)	Bi-Lateral	4.7
Diaphyseal-Broad	9, 11, 13 (160, 185, 220)	Bi-Lateral	5.3
Diaphyseal No Holes	(160, 185, 220)	Bi-Lateral	5.3
Distal Femur	6, 8, 10, 12, 14, 16 (171, 207, 243, 279, 315, 350)	Right or Left	5.1
MTP-Narrow	Porso Flexion: 0°, 5° (50)	Right or Left	2.0

Nails

Implant	Length (mm)	Diameter (mm)	Prox. Diameter (mm)
Humerus	180, 200, 220, 240, 280	8.5	10.0
Proximal Humerus	150	8.0	11.0
Tibia	260, 280, 300, 320, 340, 360, 380, 400	10.0, 11.0	11.5
Femur	200*, 300, 320, 340, 360, 380, 400, 420	10.0, 11.0, 12.0	11.5, 11.5, 12.0
Ankle Arthrodesis	160, 200, 240	10.0, 12.0	12.0

Trochanteric (PF) Nail	180, 300, 320, 340, 360, 380, 400, 420, 440*, 460*	11.0	17.0
Lag Screw	80, 85, 90, 95, 100, 105, 110	10.4	---

* Special order

MANUFACTURED BY:

CarboFix Orthopedics Ltd.
11 Ha'hoshlim St.,
Herzeliya 4672411, Israel
Tel: +972-9-9511511
Fax: +972-9-9548939
E-Mail: info@carbo-fix.com

U.S.A. OFFICE:

CarboFix Orthopedics Inc.
7183 Beach Dr SW Ste 1
Ocean Isle Beach, NC 28469, USA
Tel: 1-800-408-0120
Fax: 877-705 3567
E-Mail: usa@carbo-fix.com

EC AUTHORIZED REPRESENTATIVE:

MEDNET GmbH
Borkstrasse 10, 48163 Münster
Germany

Patents are pending

Caution: In the U.S.A., federal law restricts this device to sale by or on the order of a physician.

www.carbo-fix.com

